

# Welcome to the new age of weighing

The KERN EasyTouch software combines the performance of KERN scales with the flexibility of a Windows or Android environment

Find out more about the whole new world of weighing with KERN EasyTouch on the following pages ...



See for yourself how convenient and easy it is to use KERN EasyTouch

 **EasyTouch**  
by **KERN**





## The modular system solution for efficient weighing – perfect for your individual requirements

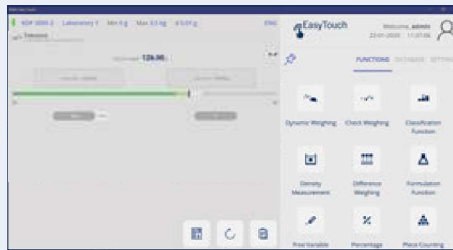
### Just imagine, ...

- ... You only pay for functions which you actually use.
- ... You could develop the range of services of your balance to meet your requirements, whenever you want.
- ... You could easily control your balance from wherever you happen to be, in the laboratory, in production, in the office.
- ... You could do this from a PC or tablet.
- ... You could save the weighing data from your balances in a tamper-proof manner on a central server, whereby all the data is systematically stored in a database.

### Then the KERN EasyTouch App (SET) is the perfect solution for you.



Large clear display for optimum view even under poor environmental conditions.



All installed functions are clearly arranged, enabling lightning-fast switching between functions.



The functions can be adapted extensively to meet your particular requirements.





## Upgrade your scale into a powerful weighing system

Using the KERN EasyTouch App even a simple single scale can be transformed into a powerful weighing system, which offers a range of functions. To do this you simply have to install the KERN EasyTouch App on your PC or tablet (Windows® or Android®), connect the balance (either with cable or wireless), activate the App and straightaway you will be able to control your balance using your PC or tablet.

In order to find out about the many advantages of the KERN EasyTouch App, you can download a demo version of the App which contains the full range of functions, i.e. you can get started straightaway and test all the functions in your own time!

In addition to the pre-installed functions the KERN EasyTouch App offers these additional handy functions:

- Large database for item master data, container weights, product images etc.
- Large database for dynamic weighing data (tamper-proof measurement value memory, logging of changes to master data, high level of data integrity, etc.)
- Access to the large database from all KERN EasyTouch functions
- Storage facility for an individual ID number or an object name for each weighing process or object in the tamper-proof Measurement value memory
- User ID with date and time is also saved for each weighing process
- Individual user administration (Administrator, User, permissions, ...), cross-functional

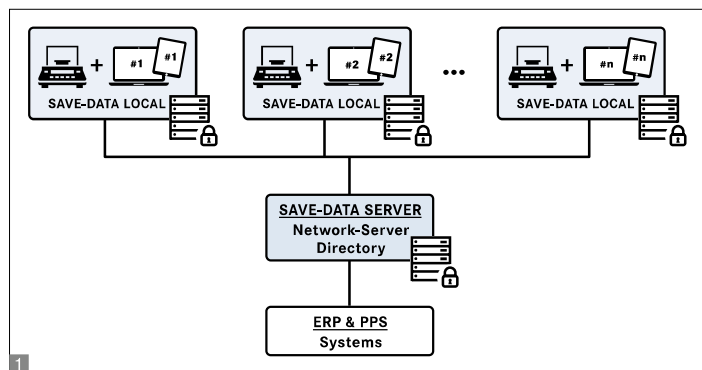
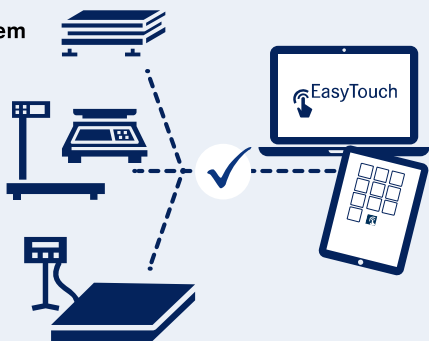
- Application of different weighing scales in one workflow (e.g. formulation or counting) possible, with full data-traceability (what item was measured on which weighing device)
- A large range of menu languages (DE, EN, FR, IT, ES, other languages on request)
- Individual print formats for printouts, including use of logos and free text
- It is possible to read barcodes using the connected barcode scanner
- All recorded weights can be printed from the individual functions using a connected network printer
- Convenient initial reading of large amounts of data, e.g. from an ERP, PPS, ... system, e.g. SAP®, and permanent synchronization of weighing and measurement data between the connected measuring instruments and the ERP, PPS, ... systems, e.g. SAP
- Compatible with Bluetooth 2.0 and 4.0
- Your KERN EasyTouch system can be expanded with many more, useful functions, which will make your daily work easier. Please see the table below or visit [www.kern-sohn.com](http://www.kern-sohn.com) for information about all available functions

### Can't find the function you need or you have a particularly specific application?

Then you can simply program your own customised function – or just ask us, our team of software specialists will be happy to help you.

This is how easy a powerful weighing system can work – with the KERN EasyTouch App

- Laptop/ tablet
- KERN EasyTouch App
- Suitable balances



## Test it – completely without risk!

### ► simple

Simply download the KERN EasyTouch software from the Microsoft Store® or Google Play®.

The KERN EasyTouch software already contains **all available functions** right from the start.

### ► tailor-made

The „**Basic Weighing Package**“ contains full database functionality. In addition they form the starting point for activating all other KERN EasyTouch functions. SET-01 OS forms the operating system with extensive basic functions. The operating system is the prerequisite for all other KERN EasyTouch Apps. All other apps can be customised on the basis of SET-01 OS.

### ► easy

**Test it for 4 weeks, without obligation and free of charge!**

After 4 weeks the functions go into sleep mode and you decide which functions you want to activate.

### ► extensive

Every purchased function license allows:

- 4 installations on PC or tablet
- the installation of an unlimited number of scales, measuring cells etc.
- as well as use by as many users as you want
- for an unlimited period

## KERN EasyTouch App – summary of all functions

Function	Application	Price
<b>ET OS – Operating system</b> Basic Weighing & Laboratory Package	(Mandatory for initial installation) Weighing, totalising (REZ A), targeted dispensing, percentage weighing	<b>SET-01</b> € 890,-
<b>ET Lab-Set</b> Premium Laboratory Package	Contains: <b>ET Recipe function</b> (SET-21) + <b>ET Difference function</b> (SET-22)	<b>SET-02</b> € 370,-
<b>ET Formulation</b> Recipe function	User administration (Administrator, User, etc.), recipe administration, component administration, targeted dispensing, multiplier function for the production of larger containers, bulk packs, etc., Adjustment of recipe when dosages are exceeded, recipe interrupt function Basic batch management, printout, etc.	<b>SET-21</b> € 350,-
<b>ET Difference</b> Difference function	Monitoring function e.g. for monitoring the growth of biological cell cultures (monitoring of defined series of test through regular weighing in defined periods of time), the weight differences are calculated automatically and a graphic growth pattern is displayed and stored, automatic sample pan recognition by barcode is possible	<b>SET-22</b> € 180,-
<b>ET Industry set</b> Premium Industrial Package	Contains: <b>ET Tolerance weighing function</b> (SET-31) + <b>ET Piece-countingfunction</b> (SET-32) + <b>ET Target-counting function</b> (SET-33)	<b>SET-03</b> € 420,-
<b>ET Tolerance</b> Tolerance weighing function	Master data administration of items and their tolerances, numeric or percentage entry of the tolerance based on the target weight or limits, weighing process is supported audibly and with a colour bar graph, each weighing result can be stored with an ID number of the particular object (batch management)	<b>SET-31</b> € 280,-
<b>ET Count</b> Piece-counting function	Master data administration of items with name in clear text, ID number, reference weight and tare weight, rapid counting function, can be a counting system, each weighing result can be stored with ID number of the particular object (batch management)	<b>SET-32</b> € 280,-
<b>ET Target-Count</b> Target-counting function	Fill-to-target function: Target count or target weight can be programmed. When the target weight is reached there is an audible and visual signal, numeric or percentage entry of the tolerance based on the target weight or limits, master data administration of items with name in clear text, ID no., reference weight and tare weight, weighing result can be stored with an ID number of the particular object (batch management)	<b>SET-33</b> € 280,-
<b>ET Density</b> Density determination function	Guidance through density determination of solid matter and liquids is particularly user-friendly and uses graphics, the density is calculated and output immediately	<b>SET-04</b> € 180,-
<b>ET Dynamic</b> Animal and dynamic weighing function	Rapid entry facility for the time interval for a dynamic weighing process in seconds. Calculation of the average weight using the time interval which has been entered, also ideal for weighing where the weighing conditions are unstable	<b>SET-05</b> € 55,-
<b>ET Classify</b> Classification function	Classification function for sorting objects into weight classes, you can name the classes as you wish, a further information field can be assigned to each class, e.g. price, etc., master data administration of items and their classes, the weighing result can be stored with an ID number of the particular object (batch management)	<b>SET-06</b> € 180,-
<b>ET Variable</b> Free variable function	Free conversion function of the weight collected unit which can be individually named and defined (e.g. g/m = surface weight), output of the weight immediately in the defined unit, master data administration of items, the weighing result can be stored with an ID number of the particular object (batch management)	<b>SET-07</b> € 65,-
<b>ET Take-out</b> Take-out function	Allows negative weighing (with take-out) from a source container, which is on the balance, visual and audible support of the take-out procedure, weight or piece display possible, statistical evaluation possible, such as, for example, average weight of the portions which have been taken out, total number of pieces which have been taken out, waste, etc., master data administration of items, the weighing result can be stored with an ID number of the particular object (batch management)	<b>SET-08</b> € 180,-
<b>ET Save-server</b> Weight storage + Save-Server function	Allows the recorded weighing data to be saved in a shared folder or server workspace, for example	<b>SET-10</b> € 900,-
<b>ET Save-cloud</b> Weight storage + Save-Server function in the Cloud	Central storage of weights and measurement data from different workplaces in the Cloud, tamper-proof	<b>SET-101</b> € 30,-/month
<b>ET Safety</b> Precision & Safety function	<ul style="list-style-type: none"> <li>Regular calibration function with individually specified test loads and defined tolerances. Warning and switch-off function, if test weighings are outside the tolerances. E.g. daily tests at defined test points with defined tolerance</li> <li>Management of the test weights used for the test with individual process time periods for each test weight, warning and switch-off function for invalid test weights</li> <li>Monitoring of the minimum sample weight (MinWeight = smallest weight to be weighed), warning and switch-off function for weighings below the permitted minimum weight</li> <li>Management of the verification or calibration of the balance used with individual process time periods for each balance, warning and switch-off function if the verification validity period or the defined recalibration period is exceeded</li> </ul>	<b>SET-11</b> € 550,-





**Weighing the easy way** – Do you want to store weighing data digitally, simply but secure? You want your users to be supported in their weighing processes? You want to reduce or avoid measuring errors and process errors? Then extend the range of functions of your scale with the KERN EasyTouch App. Whether for complex recipes, for exact piece counting or for fast and effective portioning – KERN EasyTouch always has the right function. Faster working, more comfortable data management and higher process reliability are only some of the benefits of KERN EasyTouch – weighing the easy way.

Connection possibilities KERN EasyTouch:

- 1 wired via an RS-232 interface
- 2 wireless via Bluetooth



3 Suitable RS-232/USB adapter for connecting a tablet, PC etc. to scales or measuring instruments with RS-232 output, KERN AFH 13, € 95,-



The new KERN EasyTouch app – available right now for the following KERN ranges/models:

KERN Balances and Weighing platforms				Scales from other manufacturers
440	DS	IXS	PNS/PNJ	Precisa Gravimetrics AG, CH
572/573	EG-N	KDP	SFB	Mettler-Toledo International Inc., USA, CH
ADB / ADJ	EW-N	KGP	SXS	
ALS / ALJ	FCB	NFN	UFA	
BFB	FKB	NFB	UIB	
BFN	GAB	PCB	UID	
BID <sup>(1)</sup>	IFB	PCD	KFB-TM	
CFS	IFS	PES/PEJ	KIB-TM <sup>(1)</sup>	
CKE	IOC <sup>(1)</sup>	PLS/PLJ	KXS-TM	

<sup>(1)</sup> Verified operation: Weighing data from legally regulated uses can be stored and archived in KERN EasyTouch in conformity with standards, by using models from this product family with valid calibration and measurement value memory. This standard-compliant data storage also applies to SaveServer and SaveCloud.

Other KERN ranges can be adapted to be EasyTouch compatible – keep up-to-date with the latest new on [www.kern-sohn.com](http://www.kern-sohn.com)



Ina Reger



Edgar Litti



Daniel Egeler

Our KERN EasyTouch specialists will gladly inform and advise you on all questions regarding the new KERN EasyTouch App

Tel. +49 7433 9933-200  
ETsales@kern-sohn.com



KERN EasyTouch App – available in the Microsoft Store® (Windows® version) or in the Google Play Store® (Android™ version)



All details about the new KERN EasyTouch App can be found at [www.kern-sohn.com/EasyTouch](http://www.kern-sohn.com/EasyTouch)